

# User Manual

## ZKP8005

Version: 1.0

Due to the regular upgrades of systems and products, ZKTeco could not guarantee exact consistency between the actual product and the written information in this manual.

ZKTeco Industrial Park, No. 32, Industrial Road,  
Tangxia Town, Dongguan, China.  
Phone : +86 769 - 82109991  
Fax : +86 755 - 89602394  
www.zkteco.com



Copyright © 2022 ZKTECO CO., LTD. All Rights Reserved.

## Caution

- Make sure to Install your printer on a stable surface, and prevent it from any vibration and impact.
- Do not use or store it in areas with high temperatures, humidity, or pollution levels.
- Connect the power adapter to a grounded outlet. Do not share the same plug socket with a large-scale electrical motor or other motors, which may cause voltage fluctuations in the power supply.
- Avoid getting water or other conducive materials such as metal, to get into the interface of the printer. If it occurs, unplug the AC power cord immediately.
- Do not print it without paper, or it will damage the rubber roller and the thermal print head.
- Unplug your printer before leaving it unused for an extended period of time.
- Never disassemble or modify the printer for repair or reconstruction.
- Make sure that you use the original specified power source.
- Quality roll paper is recommended for premium printing and product maintenance.
- Be sure to turn "OFF" the product of while plugging and unplugging.
- This product is only used up to 5000 metres above sea level in tropical climate conditions.
- Please make sure power is turned off while maintaining the printer.
- Don't touch or scratch printing head surface, roller and sensors.
- Avoid gas, acetone or other organic solvents.
- Wait till alcohol is completely volatilized, close the top cover and connect the power again. Operate the print for self-test to make sure it works properly.

## 1 Features

- Cable slot, specially designed for wall mounting.
- Lightweight and clean in shape.
- High-quality printing in low cost.
- Hidden low noise and high-speed printing.
- Easy for a paper refill, easy maintenance and excellent structure.
- Low power consumption and low operating costs (no ribbons or ink cartridges).
- Compatible with ESC/POS print instruction set.
- Suitable for all types of commercial retail POS systems, Restaurant system, Industrial control systems.

## 2 Packing List

Printer	1PC
Power Adapter	1SET
Power Cable	1PC
USB Cable	1PC
User Manual	1PC
Paper Roll	1ROLL
Driver	1PC

## 3 Driver Installation

### Install driver under Windows OS (Steps as below):

Double click driver "POS Printer Driver Setup V7.17".

### Installation steps :

1. First make sure whether it is set as the default printer.
2. Select the printer port to use (ignore this step directly, if it is a USB interface).
3. Click "Start" to install.

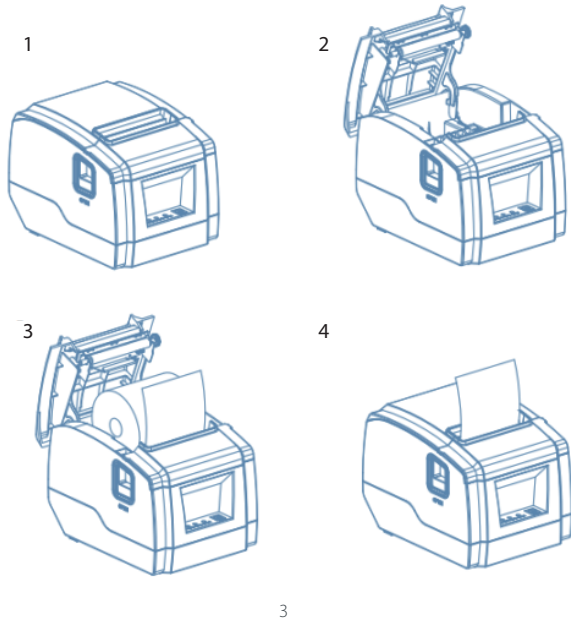
## 4 Printer Connection

1. Connect the adopter cable to the printer power interface.
2. Connect the data cable to the printer port.
3. Connect the cash drawer to the printer.

## 5 Paper Roll Loading

To install the roll paper, follow the steps below:

1. Open the paper roll cover.
2. Insert the paper roll as the following illustration shows.
3. Pull out a small roll of paper, and then close the paper roll cover.
4. Tear up the spare roll of paper.



3

4

## 8 How to Solve Paper Jam

### • Method 1

Re-start printer.

### • Method 2

Open the battery cover near the paper exit. Turn the white gear on the cutter. Only if the cutter gets back to its initial position, the cover can be opened.

*Caution: Do not damage the print head and the auto-cutter by opening the cover forcibly.*

## 9 Cleaning

**Timely clean the print head if below conditions occurred:**

1. Unclear printing.
2. Unclear vertical column in printing paper.
3. Noisy feeding.

**Clean the printer as follow:**

1. Turn off the printer and open the roll paper cover. Remove the roll paper if any.
2. After printing, the thermal head can be very hot. Wait to let it cool before cleaning.
3. Clean the thermal elements of the thermal head with wrung-out cotton moistened with an alcohol solvent.
4. Close the cover after the ethanol has been completely volatilized. After that, print the self-test page.

## 6 Description of Button and Indicator Light

### 1. FEED Button

Press to FEED paper manually.

### 2. Paper Indicator (LED Light)

The flashing blue and red lights indicate a paper shortage and the absence of an alarm means everything is going well.

### 3. Power Indicator

The presence of light indicates that it is connected properly.

### 4. Error Button

The ALARM indicator twinkles when there is a paper shortage, a cutter error, or a printing head overheating.

## 7 Button Function

### 1. Self Test

When the printer is connected to power, turn it off, then press the "FEED" button and turn it on at the same time. After 2 seconds, the completed self-test will be printed out to indicate the printer settings.

### 2. Method to Enter Hexadecimal Mode

When the printer is powered on, push the "FEED" button and turn it on at the same time for around 10 seconds before releasing the "FEED" button to enter data hex dump mode. On the paper, it will appear "Hexadecimal Dump."

### 3. Reset

When the printer is powered on, press the "FEED" button and turn it on simultaneously for roughly 20 seconds; the reset is successful if the beeper sounds.

## 10 Specifications

Item	Parameter
Paper Width	79.5±0.5mm
Print Width	72mm
Interface	USB+LAN
Line Spacing	3.75mm (Adjusted by command)
Character Size	ANK, Font A: 1.5×3.0mm Font B: 1.1×2.1mm Chinese: 3.0×3.0mm
Extension Character Sheet	PC437(Std.Europe) / (Katakana) / PC850(Multilingual) / PC860(Portugal) / PC863(Canadian) / PC865(Nordic) / (West Europe) / (Greek) / (Hebrew) / (East Europe) / (Iran) / (WPC1252) / PC866(Cyrillic#2) / PC852(Latin2) / (PC858) / (IranII) / (Latvian) / (Arabic) / (PT1511251)
Barcode Types	UPC-A / UPC-E / JAN13(EAN13) / JAN8(EAN8) / CODABAR / ITF / CODE39 / CODE93 / CODE128
CPU Storage	64 Kbytes
Flash Storage	256 Kbytes
Power Adapter	Input: AC100V to 240V/50-60 Hz Output: DC24V/2.5A
Cash Drawer	DC 24V/1A
Operation Environment	Temperature (0 - 45°C) humidity (10 - 80%)
Storage Environment	Temperature (-10 - 60°C) humidity (10 - 90%)